

# LEARNING MORE ABOUT

**Gleolan**<sup>®</sup>  
(aminolevulinic acid HCl)



## Each Situation Is Different

This brochure is intended to answer some common questions about Gleolan. It does not contain all the available information, so let your doctor know of any questions or concerns you may have.

Gleolan is known as an “optical imaging agent” that is taken by patients before surgery to help neurosurgeons to see certain brain tumors, known as “high-grade gliomas.”<sup>1</sup>

**Please see the enclosed  
full Prescribing Information.**

**LEARN MORE AT [GLEOLAN.COM](http://GLEOLAN.COM)**

# Removing the Tumor During Surgery

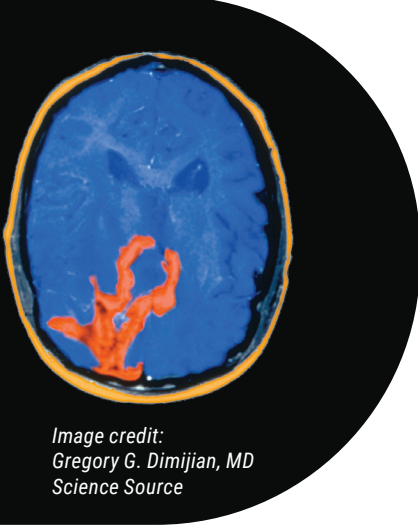


Image credit:  
Gregory G. Dimijian, MD  
Science Source

- As part of your treatment plan, your neurosurgeon will be performing surgery to remove as much of your tumor as they can safely remove. This is known as “resection.” The amount of tumor that can be removed is determined by the tumor’s size and location<sup>2</sup>
- Neurosurgeons have several tools that are helpful for locating the tumor during surgery; these tools provide information that allows for removal of as much tumor tissue as possible<sup>2</sup>

## **Gliomas generally have very small cells that grow into brain tissue, which may make them difficult to see and resect.<sup>2</sup>**

- The goal is to remove as much of the tumor as possible without harming areas of the brain that control critical functions such as speech or balance<sup>2</sup>

### **PATIENT SAFETY INFORMATION**

Gleolan can cause a sunburn-type skin reaction, also referred to as photosensitivity. Do not take any drugs that may worsen this (such as St. John’s wort, griseofulvin, thiazide diuretics, sulfonylureas, phenothiazines, sulphonamides, quinolones, and tetracyclines) and do not put anything on your skin that contains aminolevulinic acid (ALA) for 24 hours before and for 24 hours after receiving Gleolan.

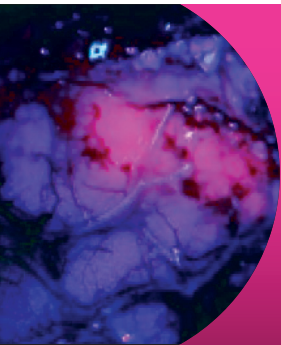
**Please see the enclosed full Prescribing Information.**

# Using Gleolan in Neurosurgery

**For your surgery, your neurosurgeon may use Gleolan® (aminolevulinic acid HCl).**

- Gleolan is known as an “optical imaging agent” that you take before surgery to help neurosurgeons see certain brain tumors known as “high-grade gliomas”<sup>1</sup>
- Gleolan is an oral solution that you will drink 3 hours (between 2 to 4 hours) before you receive anesthesia for your surgery. It contains aminolevulinic acid hydrochloride (ALA HCl)<sup>1</sup>

**During the surgery, your neurosurgeon will view the brain through special blue light filters on the surgical microscope.<sup>1</sup>**



**Under this blue light, Gleolan helps the tumor “fluoresce” or glow a red-violet color.**

- Since cancerous brain cells glow under the blue light with Gleolan, the neurosurgeon will be better able to tell the difference between the tumor tissue and normal tissue (see image above)<sup>1</sup>
- This may allow the neurosurgeon to remove more of the tumor tissue and spare healthy tissue<sup>1</sup>

**LEARN MORE AT [GLEOLAN.COM](https://www.gleolan.com)**

**Gleolan®**  
(aminolevulinic acid HCl)

# Common Questions About Gleolan



## WHAT IS GLEOLAN® (aminolevulinic acid HCl) FOR?

Gleolan is known as an “optical imaging agent” that is taken by patients before surgery to help neurosurgeons to see certain brain tumors known as “high-grade gliomas.”<sup>1</sup>



## IS THERE ANYONE WHO SHOULD NOT TAKE GLEOLAN?

You should not take Gleolan if you have an allergy to any medicine containing aminolevulinic acid or porphyrins or have a condition called porphyria.<sup>1</sup>

Tell your doctor about any allergies or conditions that you have and mention all medications that you are currently taking. If you are pregnant, breastfeeding, or suspect that you may be pregnant, let your doctor know. Your doctor can discuss with you the risks and benefits involved.

## **PATIENT SAFETY INFORMATION (continued)**

Errors may occur with the use of Gleolan to see tumors. Sometimes brain tumor cells may fluoresce even if they are not cancerous or those that are cancerous may not fluoresce. Also, cancer cells from other tumors or areas of swelling may fluoresce.

**Please see the enclosed full Prescribing Information.**

## ARE THERE ANY SIDE EFFECTS WITH GLEOLAN?

Even though the active chemical in Gleolan is already in your body, you may experience some side effects from Gleolan. Tell your doctor if you experience any unusual symptoms or reactions.<sup>1</sup>

The types of reactions that occurred in some patients in the week after surgery were fever (pyrexia), decrease in blood pressure (hypotension), nausea, and vomiting.<sup>1</sup>

Disorders that affect the nervous system happened in a small percentage of patients in the first weeks after surgery. These included: a total or partial loss of ability to use or understand language (aphasia), partial paralysis of one side of the body (hemiparesis), blindness for half the field of vision in one or both eyes (hemianopsia), headache, seizure, paralysis of one side of the body (hemiplegia), paralysis of a single limb (monoparesis), and reduced sense of touch (hypoesthesia). Swelling of the brain (brain edema) occurred in a small percentage of patients in the first 6 weeks after surgery. Neurologic events related to the surgical procedure occurred in 29% of patients and included headache, seizure, moderate loss of sensory and motor function, and swelling of the brain (brain edema). The changes in neurologic function returned to the same as the non-treated group during the weeks after surgery.<sup>1</sup>

Inflammation or damage to your liver is possible within the first week after surgery (and may continue beyond 6 weeks). This should be monitored carefully by your doctor.<sup>1</sup>

**You are encouraged to report any side effects of prescription drugs to the FDA. Visit [www.fda.gov/medwatch](http://www.fda.gov/medwatch) or call 1-800-FDA-1088.**

LEARN MORE AT [GLEOLAN.COM](http://GLEOLAN.COM)

  
(aminolevulinic acid HCl)

# Common Questions About Gleolan (continued)



## TAKING GLEOLAN® (aminolevulinic acid HCl)

Your doctor and the team in the hospital will determine how much Gleolan you should take based on your body weight and will prepare a Gleolan solution for you to drink 3 hours (between 2 to 4 hours) before you receive anesthesia. Be sure to carefully follow all directions given to you by your medical team. The liquid is clear/yellowish and has a sour taste.<sup>1</sup>



## WHAT IS PHOTSENSITIVITY?

Gleolan makes you more sensitive to sunlight and direct indoor lighting, which is referred to as photosensitivity, and can cause a sunburn-type reaction. The hospital team will make sure you are kept in low-light conditions from the time you take Gleolan until you are discharged. You should maintain these low-light conditions at home and avoid sunlight until 48 hours from the time you took Gleolan. You may wish to bring a hat and clothing to the hospital so that your body can be completely covered when you are discharged.<sup>1</sup>

You will also need to avoid certain drugs that may worsen a potential sunburn-type reaction (such as St. John's wort, griseofulvin, thiazide diuretics, sulfonyleureas, phenothiazines, sulphonamides, quinolones, and tetracyclines) and not put anything on your skin that contains ALA for 24 hours before and for 24 hours after taking Gleolan. Ask your medical team if you have any questions about this.<sup>1</sup>

## PATIENT SAFETY INFORMATION (continued)

Allergic reactions, including serious allergic reactions, to Gleolan have occurred. Your medical team should monitor you for this and should have emergency equipment ready to manage any such reaction if it occurs.

**Please see the enclosed full Prescribing Information.**



## WHEN WAS GLEOLAN APPROVED?

Gleolan was approved in the United States by the Food and Drug Administration (FDA) in 2017. In other countries, it was approved as early as 2007. To date, more than 100,000 patients have received this drug worldwide.<sup>1,2</sup>



## IS GLEOLAN COVERED BY INSURANCE?

Gleolan is considered part of the surgical procedure and is covered through payment to the hospital. Contact your healthcare insurer with questions regarding coverage of Gleolan.



Please see your doctor if you have any questions or concerns about Gleolan



LEARN MORE AT [GLEOLAN.COM](https://www.gleolan.com)

**Gleolan**<sup>®</sup>  
(aminolevulinic acid HCl)



# Gleolan<sup>®</sup>

(aminolevulinic acid HCl)

LEARN MORE AT [GLEOLAN.COM](https://www.gleolan.com)



## WILL GLEOLAN<sup>®</sup> AFFECT TREATMENT THAT I RECEIVE AFTER SURGERY?

Use of Gleolan does not affect the use of other treatments for your cancer such as radiotherapy or chemotherapy.



## DOES GLEOLAN TREAT CANCER?

Gleolan is not a treatment for cancer. Its use, as approved by the FDA, is to assist the neurosurgeon during surgery to see the brain tumor to enable safe removal of as much of it as possible.<sup>1</sup>

## PATIENT SAFETY INFORMATION

Gleolan can cause a sunburn-type skin reaction, also referred to as photosensitivity. Do not take any drugs that may worsen this (such as St. John's wort, griseofulvin, thiazide diuretics, sulfonylureas, phenothiazines, sulphonamides, quinolones, and tetracyclines) and do not put anything on your skin that contains aminolevulinic acid (ALA) for 24 hours before and for 24 hours after receiving Gleolan.

**Please see the enclosed full Prescribing Information.**

**References:** 1. Gleolan [(aminolevulinic acid HCl) for oral solution] Prescribing Information. 2. Data on file. Medexus Pharma, Inc.

**MEDEXUS**  
PHARMA

© 2022 Medexus Pharma, Inc. All rights reserved.  
MP-GLE0-0022 July 2022



## HIGHLIGHTS OF PRESCRIBING INFORMATION

These highlights do not include all the information needed to use GLEOLAN safely and effectively. See full prescribing information for GLEOLAN.

**GLEOLAN® (aminolevulinic acid hydrochloride) for oral solution**  
Initial U.S. Approval: [1999]

### INDICATIONS AND USAGE

leolan is an optical imaging agent indicated in patients with glioma (suspected World Health Organization Grades III or IV on preoperative imaging) as an adjunct for the visualization of malignant tissue during surgery. (1)

### DOSAGE AND ADMINISTRATION

- For oral use only. (2.1)
- Recommended reconstituted oral dose of Gleolan is 20 mg/kg. (2.1)
- Administer Gleolan to patient orally 3 hours (range 2 to 4 hours) before anesthesia. (2.1)
- See Full Prescribing Information for reconstitution information. (2.2)
- Use appropriate visualization techniques with appropriate surgical microscopes and light source filters. (2.4)

### DOSAGE FORMS AND STRENGTHS

For oral solution: 1,500 mg aminolevulinic acid hydrochloride lyophilized powder, equivalent to 1,170 mg aminolevulinic acid per vial. The reconstituted aminolevulinic acid hydrochloride solution contains 30 mg per mL and is clear and colorless to slightly yellowish in color. (3)

### CONTRAINDICATIONS

- Hypersensitivity to aminolevulinic acid (ALA) or porphyrins. (4, 5.3, 6.2)
- Acute or chronic types of porphyria. (4)

### WARNINGS AND PRECAUTIONS

- Phototoxic reactions: Do not administer phototoxic drugs (St. John's wort, griseofulvin, thiazide diuretics, sulfonyleureas, phenothiazines, sulphonamides, quinolones and tetracyclines), and topical preparations containing ALA for 24 hours during the perioperative period. Reduce exposure to sunlight or room lights for 48 hours after oral administration of Gleolan. (5.1, 7)
- Risk of misinterpretation: Non-fluorescing tissue in the surgical field does not rule out the presence of tumor. (5.2, 14)

### ADVERSE REACTIONS

- Adverse reactions occurring in >1% of patients in the week following surgery were pyrexia, hypotension, nausea, and vomiting. (6.1)
- Adverse reactions occurring in < 1% of patients in the first 6 weeks after surgery were: chills, photosensitivity reaction, solar dermatitis, hypotension, abnormal liver function test, and diarrhea. (6.1)
- Neurologic events related to the surgical procedure occurred in 29% of patients and included: aphasia, hemiparesis, hemianopia, headache, seizure, hemiplegia, monoparesis, hypoesthesia, and brain edema. (6.1)
- Elevated liver enzymes occurred in clinical studies. There were no cases of liver failure. (6.1)

To report SUSPECTED ADVERSE REACTIONS, contact NXDC toll-free at (844) 517-5252 and [adverseevents@nxdecorp.com](mailto:adverseevents@nxdecorp.com) or FDA at 1-800-FDA-1088 or [www.fda.gov/medwatch](http://www.fda.gov/medwatch).

### See 17 for PATIENT COUNSELING INFORMATION

Revised: 03/2024

## FULL PRESCRIBING INFORMATION

### 1 INDICATIONS AND USAGE

Gleolan is indicated in patients with glioma [suspected World Health Organization (WHO) Grades III or IV on preoperative imaging] as an adjunct for the visualization of malignant tissue during surgery.

### 2 DOSAGE AND ADMINISTRATION

#### 2.1 Recommended Dose

- For oral use only
- The recommended oral dose of reconstituted Gleolan is 20 mg / kg body weight. More than 1 vial may be required.

#### 2.2 Reconstitution of Gleolan

Gleolan powder must be reconstituted prior to administration by a healthcare provider according to the following instructions:

- Determine the total number of vials needed to achieve the intended dose for the patient according to the equation below (rounded up to the nearest whole vial):

$$\# \text{ of vials} = \frac{\text{Patient Body Weight (kg)}}{75 \text{ kg/vial}}$$

- Completely remove the white cap and aluminum crimp seal from each vial.
- Remove and retain the rubber stopper from the vial.
- Using an appropriate volumetric measuring device (e.g., flask, graduated cylinder, dosing syringe), measure 50 mL of drinking water and add to each vial containing 1,500 mg of Gleolan.
- Gently swirl the vial to completely dissolve the powder.
- The resulting reconstituted solution (30 mg of Gleolan per mL) is clear and colorless to slightly yellowish.
- If required, replace the stopper and store reconstituted solution for up to 24 hours at room temperature prior to administration.

#### 2.3 Gleolan Administration

Gleolan is for ORAL USE ONLY. The reconstituted Gleolan solution is administered according to the following steps:

- Calculate the administration volume, in mL, to achieve the intended dose according to the following equation:

$$\text{Administration Volume (mL)} = \frac{\text{Patient Body Weight (kg)} \times 20\text{mg/kg}}{30\text{mg/mL}}$$

- Transfer the entire contents of the prepared vial(s) into an appropriate dosing container (e.g., oral medicine bottle); ensure the entire contents of the vials are transferred.
- After transfer, discard the empty vial(s).
- Using a disposable volumetric syringe, remove the administration volume of reconstituted Gleolan solution from the dosing container and transfer to a separate oral dosing container.
- Discard unneeded volume of Gleolan solution.
- Administer orally 3 hours (range 2 to 4 hours) prior to induction of anesthesia.

#### 2.4 Imaging Instructions

- Gleolan should be used with a standard surgical operating microscope adapted with a blue light emitting light source (power density 40-80 mW/cm<sup>2</sup>) and ancillary excitation and emission filters to visualize fluorescence excitation in the wavelength of 375 to 440 nm and for observation from 620 to 710 nm. Filters transmit porphyrin fluorescence as red-violet, as well as a fraction of backscattered blue excitation light necessary for distinguishing nonfluorescing tissue.

- Gleolan should only be used by neurosurgeons who have completed a training program on use of fluorescence in surgery. Training is provided by the distributor.

### 3 DOSAGE FORMS AND STRENGTHS

For oral solution: 1,500 mg aminolevulinic acid hydrochloride (ALA HCl) lyophilized powder, equivalent to 1,170 mg aminolevulinic acid (ALA), in a 50 mL single-dose clear, colorless, glass vial with rubber stopper. After reconstitution with 50 mL drinking water, the solution contains 30 mg per mL of aminolevulinic acid hydrochloride (equivalent to 23.4 mg per mL of aminolevulinic acid) and is clear and colorless to slightly yellowish in color.

## 4 CONTRAINDICATIONS

- Hypersensitivity to aminolevulinic acid (ALA) or porphyrins. [See Warnings and Precautions (5.3)]
- Acute or chronic types of porphyria, due to potential ineffectiveness of the drug in these patients.

## 5 WARNINGS AND PRECAUTIONS

### 5.1 Risk of Phototoxic Reaction

Due to the risk of phototoxic reactions, do not administer phototoxic drugs (St. John's wort, griseofulvin, thiazide diuretics, sulfonyleureas, phenothiazines, sulphonamides, quinolones and tetracyclines), and topical preparations containing ALA for 24 hours during the perioperative period [see Drug Interactions (7)]. Reduce exposure to sunlight or room lights for 48 hours after administration of Gleolan.

### 5.2 Risk of Misinterpretation

Errors may occur with the use of Gleolan for intraoperative visualization of malignant glioma, including false negatives and false positives. Non-fluorescing tissue in the surgical field does not rule out the presence of tumor in patients with glioma [see Clinical Studies (14)]. Fluorescence may be seen in areas of inflammation or metastases from other tumor types.

### 5.3 Hypersensitivity Reactions

Hypersensitivity reactions, including serious hypersensitivity reactions have occurred; these reactions include anaphylactic shock, swelling, and urticaria [see Contraindications (4), Adverse Reactions (6.2)]. Always have cardiopulmonary resuscitation personnel and equipment readily available and monitor all patients for hypersensitivity reactions.

## 6 ADVERSE REACTIONS

### 6.1 Clinical Trial Experience

Because clinical trials are conducted under widely varying conditions, adverse reaction rates observed in the clinical trials of a drug cannot be directly compared to rates in the clinical trials of another drug and may not reflect the rates observed in practice.

The safety of Gleolan is supported by data from 5 open label clinical studies, which included 527 patients with glioma who received ALA HCl. Adverse reactions that occurred in > 1% of patients in the week following surgery were pyrexia, hypotension, nausea, and vomiting. Adverse reactions occurring in the first 6 weeks after surgery in < 1% of patients were: chills, photosensitivity reaction, solar dermatitis, hypotension, abnormal liver function test, and diarrhea. One patient experienced respiratory failure due to drug overdose [see Overdosage (10)].

### Neurologic Events

Nervous system disorders occurred in 29% of patients within the first week after surgery. Events occurring in > 1% of patients included aphasia (8%), hemiparesis (7.8%), hemianopsia (3.2%), headache (2.7%), seizure (1.9%), hemiplegia (1.9%), monoparesis (1.3%) and hypoesthesia (1.1%). Brain edema occurred in < 1% of patients in the first 6 weeks after surgery. In a randomized clinical trial (Study 3), the numbers of serious neurologic adverse events in the post operative period were higher in patients randomized to ALA fluorescence arm compared to the control arm. An imbalance was notable for the adverse events aphasia, ataxia, convulsion and hemianopsia, and is likely related to the higher amount of brain resection performed in the ALA arm. At longer follow up periods, the numbers between the two arms appeared similar [see Clinical Trials (14)].

### Elevated Liver Enzymes

Worsening of ≥ 2 Common Toxicity Criteria (CTC) grades in alanine aminotransferase (ALT) and gamma-glutamyl transferase (GGT) occurred in (15.8% and 11.6%, respectively) within the first week after surgery. Absolute levels ranged from 2 times to greater than 10 times the upper limit of normal (ULN) for each parameter. At 6 weeks, ALT remained elevated in 2.9% of patients (range 2 to greater than 5 X ULN), and GGT was elevated in 7.5% of patients (range 2 to greater than 10 X ULN). No cases of liver failure occurred.

## FULL PRESCRIBING INFORMATION: CONTENTS\*

1	INDICATIONS AND USAGE	8.4	Pediatric Use
2	DOSAGE AND ADMINISTRATION	8.5	Geriatric Use
2.1	Recommended Dose	8.6	Patients with Renal Impairment
2.2	Reconstitution of Gleolan	8.7	Patients with Hepatic Impairment
2.3	Gleolan Administration	10	OVERDOSAGE
2.4	Imaging Instructions	11	DESCRIPTION
3	DOSAGE FORMS AND STRENGTHS	11.1	Chemical Properties
4	CONTRAINDICATIONS	12	CLINICAL PHARMACOLOGY
5	WARNINGS AND PRECAUTIONS	12.1	Mechanism of Action
5.1	Risk of Phototoxic Reaction	12.2	Pharmacodynamics
5.2	Risk of Misinterpretation	12.3	Pharmacokinetics
5.3	Hypersensitivity Reactions	13	NONCLINICAL TOXICOLOGY
6	ADVERSE REACTIONS	13.1	Carcinogenesis, Mutagenesis, Impairment of Fertility
6.1	Clinical Trial Experience	14	CLINICAL STUDIES
6.2	Post Marketing Experience	16	HOW SUPPLIED/STORAGE AND HANDLING
7	DRUG INTERACTIONS	16.1	How Supplied
8	USE IN SPECIFIC POPULATIONS	16.2	Storage and Handling
8.1	Pregnancy	17	PATIENT COUNSELING INFORMATION
8.2	Lactation		

\*Sections or subsections omitted from the full prescribing information are not listed.

## 6.2 Post Marketing Experience

The following adverse reactions are among those that have been identified during post-approval use of Gleolan outside of the United States. Because these reactions are reported voluntarily from a population of uncertain size, it is not always possible to reliably estimate their frequency or establish a causal relationship to drug exposure.

*Immune Disorders:* anaphylactic shock, angioedema, drug eruption, urticaria, erythema.

*Metabolism and Nutrition Disorders:* metabolic acidosis.

## 7 DRUG INTERACTIONS

### Phototoxic Drugs

Patients exposed to a photosensitizing agent may experience a phototoxic skin reaction (severe sunburn). Due to the risk of possible phototoxic reactions, avoid administering phototoxic drugs such as St. John's wort, griseofulvin, thiazide diuretics, sulfonyleureas, phenothiazines, sulphonamides, quinolones and tetracyclines, and topical preparations containing ALA for 24 hours before and after administration of Gleolan.

## 8 USE IN SPECIFIC POPULATIONS

### 8.1 Pregnancy

#### Risk Summary

There are no available human data on Gleolan in pregnant women to inform a drug associated risk of adverse developmental outcomes. In animal reproduction studies, no adverse developmental effects were observed with oral ALA HCl administration to pregnant rabbits during organogenesis at doses 3 times the maximum recommended human oral dose (*see Data*).

The estimated background risk of major birth defects and miscarriage for the indicated populations are unknown. All pregnancies have a background risk of birth defect, loss, or other adverse outcomes. In the U.S. general population, the estimated background risk of major birth defects and miscarriage in clinically recognized pregnancies is 2-4% and 15-20%, respectively.

#### Animal data

ALA HCl was administered to rabbits at oral doses of 15, 50 and 150 mg/kg/day [approximately 0.1, 0.6, and 3 times the maximum human recommended dose (MHRD), respectively based on AUC comparisons] from gestation days 6-18. The no-observed-adverse-effect level (NOAEL) for maternal toxicity was 50 mg/kg/day and the NOAEL for embryo-fetal developmental toxicity was 150 mg/kg/day.

### 8.2 Lactation

#### Risk summary

There are no data on the presence of ALA HCl in either human or animal milk, the effects on the breastfed infant, or the effects on milk production. The developmental and health benefits of breastfeeding should be considered along with the mother's clinical need for Gleolan and any potential adverse effects on the breastfed infant from Gleolan or from the underlying maternal condition.

#### Clinical Considerations

To decrease exposure to Gleolan to the breastfed infant, advise a lactating woman to pump and discard breast milk after the administration of Gleolan for 24 hours (i.e., 5 to 6 half-lives).

### 8.4 Pediatric Use

The safety and effectiveness of Gleolan in pediatric patients have not been established.

### 8.5 Geriatric Use

Of 527 subjects in clinical studies of Gleolan, 182 were 65 to < 75 years of age and 7 were ≥ 75 years of age. No overall differences in safety or effectiveness were

observed between these subjects and younger subjects, and other reported clinical experience has not identified differences in responses between the elderly and younger patients, but greater sensitivity of some older individuals cannot be ruled out. No dose adjustment is required in elderly patients.

### 8.6 Patients with Renal Impairment

Because approximately one third of the ALA dose is excreted in urine as parent drug, ALA clearance may be reduced in patients with renal impairment; it is not known if dose adjustment is needed [*see Clinical Pharmacology (12.3)*].

### 8.7 Patients with Hepatic Impairment

The contribution of the liver to the elimination of ALA following Gleolan dosing is unknown. ALA clearance may be reduced in patients with hepatic impairment; it is not known if dose adjustment is needed [*see Clinical Pharmacology (12.3)*].

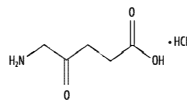
## 10 OVERDOSAGE

Overdosage has been associated with respiratory insufficiency and erythema. In the event of overdose, supportive measures should be provided as necessary, including protection from strong light sources.

## 11 DESCRIPTION

### 11.1 Chemical Properties

Gleolan (aminolevulinic acid hydrochloride) is an optical imaging agent for oral solution. The 50-mL, clear vial contains 1,500 mg of lyophilized aminolevulinic acid HCl powder (equivalent to 1,170 mg aminolevulinic acid). After reconstitution, the product has a concentration of 30 mg aminolevulinic acid hydrochloride per mL (equivalent to 23.4 mg aminolevulinic acid per mL). The chemical name is 5-amino-4-oxo-pentanoic acid hydrochloride. The chemical formula for aminolevulinic acid hydrochloride is C<sub>5</sub>H<sub>10</sub>ClNO<sub>3</sub>. Its molecular weight is 167.59 g/mol with the following structural formula:



## 12 CLINICAL PHARMACOLOGY

### 12.1 Mechanism of Action

ALA occurs endogenously as a metabolite that is formed in the mitochondria from succinyl-CoA and glycine. Exogenous administration of ALA leads to accumulation of the ALA metabolite PpIX in tumor cells. The reason for the accumulation of PpIX in neoplastic brain tissue is not known.

During glioma surgery, Gleolan is used with an operating microscope adapted with a blue emitting light source (power density 40-80 mW/cm<sup>2</sup>) and filters for excitation light of wavelength 375 to 440 nm, and observation at wavelengths of 620 to 710 nm. This allows tumor tissue to be visualized as red fluorescence. Tissue lacking sufficient PpIX concentrations appears blue.

### 12.2 Pharmacodynamics

The effect of the timing of the Gleolan dosing on fluorescence intensity in brain tissue is unknown. The relationship between systemic ALA plasma concentrations at the time of visualization and fluorescence intensity in brain is also unknown. The dose of 20 mg / kg provided stronger ALA-induced fluorescence in glioma tissue by both visual and spectrophotometric assessment compared to lower doses tested.

#### Cardiac Electrophysiology

Administration of the approved recommended dose of Gleolan did not prolong the QT interval to any clinically relevant extent.

### 12.3 Pharmacokinetics

In 12 healthy subjects, the mean half-life of ALA following the recommended dose of Gleolan solution was 0.9 ± 1.2 hours (mean ± std dev) with a range of 0.8 to 1.3 hours. Maximum concentrations of the PpIX metabolite (T<sub>max</sub> for PpIX) occurred with a median of 4 hours and a range of 1.2 to 7.8 hours. The elimination half-life of PpIX was 3.6 ± 1.8 hours (mean ± std dev) with a range of 1.2 to 7.8 hours.

### Absorption

In 12 healthy subjects, the absolute bioavailability of ALA following the recommended dose of Gleolan solution was 100.0% ± 1.1 with a range of 78.5% to 131.2%. Maximum ALA plasma concentrations were reached with a median of 0.8 hour (range 0.5 – 1.0 hour).

### Distribution

In vitro experiments using ALA concentrations up to approximately 25% of the maximal concentration that occurs in plasma following the recommended dose of Gleolan solution, the mean protein binding of ALA was 12%.

### Elimination

#### Metabolism

Exogenous ALA is metabolized to PpIX, but the fraction of administered ALA that is metabolized to PpIX is unknown. The average plasma AUC of PpIX is less than 6% of that of ALA.

#### Excretion

In 12 healthy subjects, excretion of parent ALA in urine in the 12 hours following administration of the recommended dose of Gleolan solution was 34 ± 8% (mean ± std dev) with a range of 27% to 57%.

#### Specific Populations

The effect of renal or hepatic impairment on the pharmacokinetics of ALA following Gleolan administration is unknown.

#### Drug Interaction Studies

In vitro studies suggest that phenytoin and other anti-convulsants may decrease cellular PpIX accumulation following Gleolan dosing.

ALA is not an inhibitor of CYP1A2, 2B6, 2C8, 2C9, 2C19, 2D6, or 3A.

## 13 NONCLINICAL TOXICOLOGY

### 13.1 Carcinogenesis, Mutagenesis, Impairment of Fertility

#### Carcinogenesis

No carcinogenicity studies have been conducted with Gleolan.

#### Mutagenesis

ALA HCl was not mutagenic in the Ames assay, hprt-v79 mammalian cell mutagenicity test, the peripheral human lymphocyte chromosomal aberration assay and the *in vivo* mouse micronucleus test when studies were performed in the dark or under subdued lighting.

#### Impairment of Fertility

No fertility studies have been conducted with Gleolan.

## 14 CLINICAL STUDIES

The efficacy of 20 mg / kg ALA HCl was evaluated in 3 clinical studies (Study 1-3) involving patients, ages 18 to 75 years old, who had a preoperative MRI compatible with high-grade glioma (WHO Grade III or IV) and were undergoing surgical resection.

Study 1 was an open-label study of 33 patients with newly diagnosed high-grade glioma and Study 2 was an open-label study of 36 patients with recurrent high-grade glioma. In Studies 1 and 2, after initial debulking was carried out under white light, biopsies were obtained under fluorescent light from fluorescent and nonfluorescent sites. Presence of fluorescence (positive/negative) was compared to tumor status (true/false) using histopathology as the reference standard. True positives and false positives among fluorescent biopsies and true negatives and false negatives among nonfluorescent biopsies are provided in Table 1.

Study 3 was a randomized, multicenter study in 415 patients with a preoperative diagnosis of high-grade glioma by MRI. Patients were randomized in 1:1 ratio to ALA fluorescence arm or to white light control arm. Biopsies were obtained from tumor-core, tumor-margin and regions just distant to the tumor margins. In 349 patients high grade glioma was confirmed by a blinded central read and histopathology. The remaining patients were diagnosed with metastatic disease, abscess, low-grade glioma or other conditions.

In patients with confirmed high-grade glioma randomized to the ALA fluorescence arm, presence of fluorescence at a biopsy level was compared to tumor status using histopathology as the reference standard (Table 1). In 4 patients with low-grade glioma (WHO Grade I or II) who received ALA HCl, 9 out of 10 biopsies were false negative.

The extent of resection among patients with confirmed high-grade glioma in the ALA fluorescence arm was compared to that among patient in the control arm, with the "completeness" of resection being determined by a central blinded read of early post-surgical MRI. Percentage of patients who had "completeness" of resection was 64% in the ALA arm and 38% in the control arm, with the difference of 26% [95% CI: (16%,36%)].

**Table 1. Presence of Fluorescence Compared to Histopathology (biopsy level)**

	Study 1 (N=297)*	Study 2 (N=370)*	Study 3 (N=479)*
<b>Number of Fluorescent Biopsies</b>	<b>185</b>	<b>354</b>	<b>319</b>
<b>True Positive</b>	<b>178</b>	<b>342</b>	<b>312</b>
<b>False Positive</b>	<b>7</b>	<b>12</b>	<b>7</b>
<b>Number of Nonfluorescent Biopsies</b>	<b>112</b>	<b>16</b>	<b>160</b>
<b>True Negative</b>	<b>27</b>	<b>3</b>	<b>30</b>
<b>False Negative</b>	<b>85</b>	<b>13</b>	<b>130</b>

\* N is Number of total (fluorescent and non-fluorescent) biopsies

## 16 HOW SUPPLIED/STORAGE AND HANDLING

### 16.1 How Supplied

Gleolan (NDC 59137-231-01) is supplied as 1,500 mg of lyophilized aminolevulinic acid hydrochloride powder (equivalent to 1,170 mg aminolevulinic acid), for oral solution in a 50-mL clear, colorless, glass vial with a rubber stopper and an aluminum crimp seal.

### 16.2 Storage and Handling

Store at 25 °C (77 °F); excursions permitted to 15-30 °C (59-86 °F).

## 17 PATIENT COUNSELING INFORMATION

Advise patients that they may experience elevated liver enzymes (ALT and GGT) within the first week after surgery. This elevation may persist after 6 weeks. Advise patients to reduce exposure to sunlight or room lights for 48 hours after administration of Gleolan due to risk of phototoxic reactions.

Manufactured for:  
NX Development Corp.  
Lexington, KY 40503

Distributed by:  
Medexus Pharma, Inc.  
Chicago, IL 60606

Product of Germany